

ESEL LINE

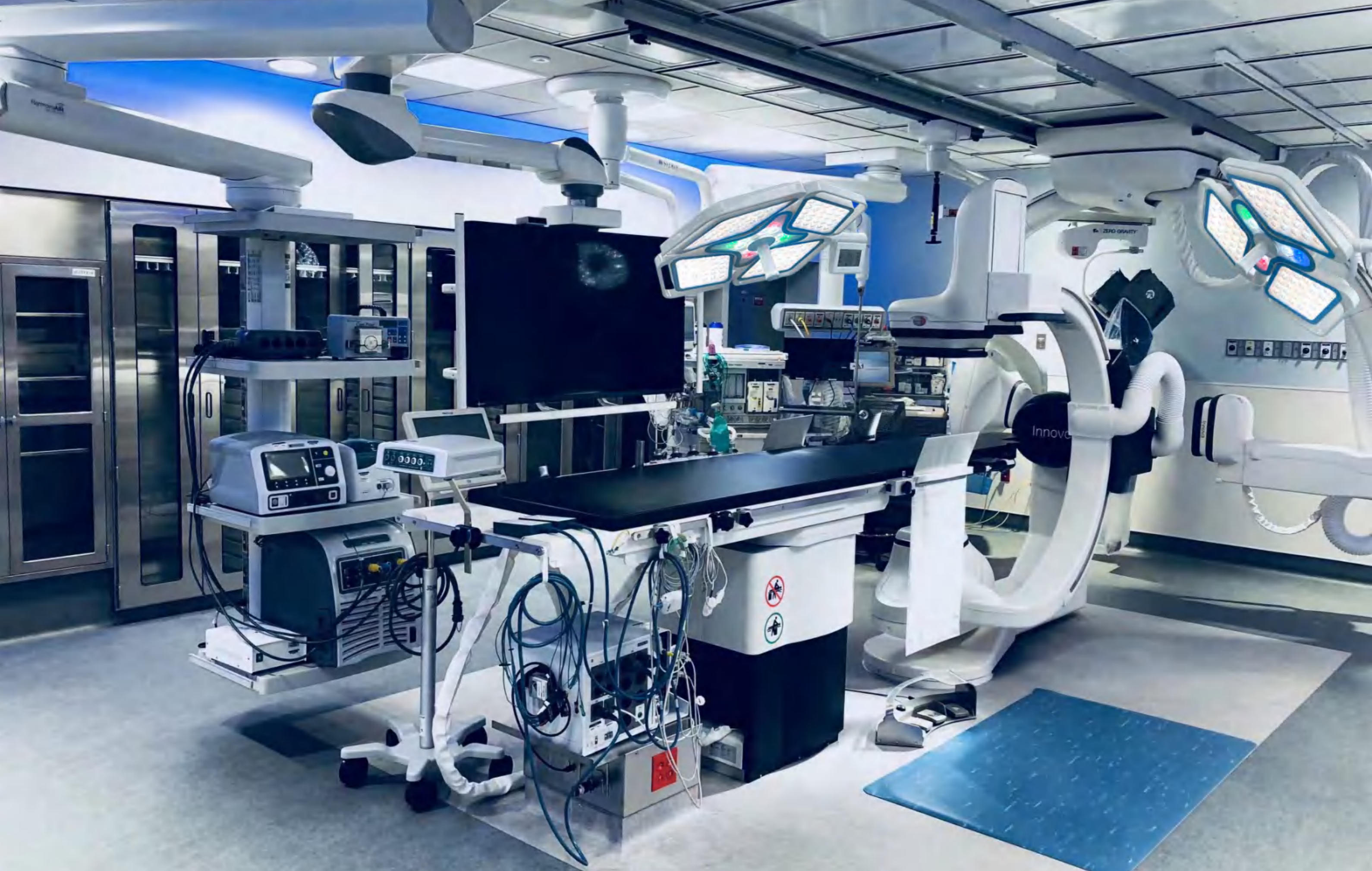
Hybrid Room
OR Light

—
UNIQUE
DESIGN
FOR IDEAL
LIGHTING

Demanding tasks require special solutions. With our innovative surgical lights we give you all the benefits of cutting-edge LED technology, in a uniquely effective way. We offer trendsetting light and system solutions that can be retrofitted easily and without special preparation. This includes, for example, the wireless equipping of your surgical lights with cameras.

INNOVATIVE & DIFFERENT





Medical equipment including monitors and control panels on a stand.



Robotic surgical system (Innovis) with articulated arms and a control console.





High quality LEDs
with the lowest infrared or ultraviolet emissions, protects the patient from drying out of the tissue and provides a high quality working condition with the constant high-class lighting temperature to the operator.



Active Shadow Management
light precisely where you need it with Active Shadow Optional Management is a fully automatic system for ensuring that light is always available exactly where it is needed.



Perfect and even illumination
can be adjusted for any situation 112PCS powerful LEDs ensure that the surgical site always appears in the best light, literally. The conditions for a successful procedure are always ideal.

MAX-beam path for maximum variability

And that particularly applies to the surgical field and how it is illuminated. With its innovative beam path concept the MAX-LED offers you a previously unattainable light field size from 15 cm to 35 cm.

Your benefits at a glance:

- Ŷ Warm white/cold white LEDs for brilliant, homogenous light
- Ŷ Variable light field geometry and matrix light function
- Ŷ Active Shadow Management for shadow-free illumination
- Ŷ combined with excellent color rendering
- Ŷ Maximum light field variability with innovative beam path concept

EXTREMELY FUNCTIONAL

You have options for operating our LED lights. The control panel on the light for setting the main functions. You can use the touch-sensitive controller to adjust every parameter for your specific requirements during the operation. And even better: you can set your own "personal light", the precise light settings that you prefer. You can also control all the functions of the LED camera systems without difficulty. All completely intuitive with the self-explanatory, icon-based operation of the touch screen.

Flexible Manage
4.3Inches TFT LCD Touch Screen With Functional:
Light Intensity , Light Beam , Color Temperature, EndoLight Control



Ambiant Lights Balance
Green Ambient in Endolight less stressful on the eyes during surgery
Red Ambient In Endolight provides optimum visualisation of red tissues. Red balance enhancement compensates for our natural weakness in distinguishing shades of red and is user adjustable to fine-tune the light to match our own red vision and the surgical conditions.



Language Customization
different languages supported:
Spanish, French, Russian, Portuguese, Arabic, German, Italian, Japanese, Korean etc.



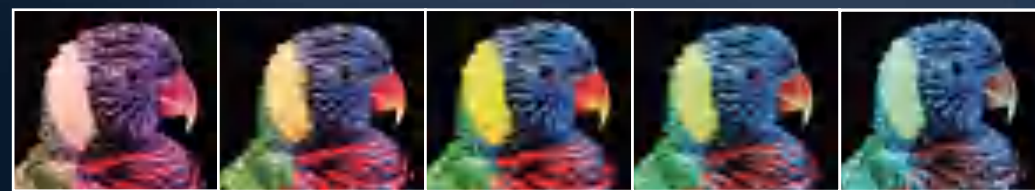


Clear Visualization For Better Results

Improved Beam Technology Quick and Comfortable Usage Special lens technology designed for surgical lighting fully compatible with LED, provides homogeneous light field; when the light field is changed, the light intensity does not change.

Multi Colours

Adjustable color control



3,000 K 4,000 K 4,500 K 5,000 K 5,800 K

MAX-LED provides adjustable color temperature to optimize visualization of red tissues. Color temperature is variable from 3000K – 5800K.

- Multiple Light Beam Configuration for Shadowless Illumination
- Improved Beam Technology
- No flicker effect
- Quality Light
- Super Optical Performance
- 4.3" TFT LCD Touch Screen Panel
- Memory function
- Easy to clean
- Endo Mode
- Ergonomic and practical design
- Laminar Air Flow
- Quick and comfortable usage
- Extra Protection



- Functional slimline design of the light housing
- Light-emitting area from genuine glass
- Easy-to-clean closed housing shape – therefore extremely hygienic
- Shape optimized for flow to prevent air turbulence
- Suitable for laminar air flow systems
- IP55: complete protection from dust deposits and moisture inside

TECHNICAL SHEET

Our LED lamp is the intelligent solution for any operating theatre. The design is optimised for an OR's air flow, improving air flow circulation in the operating area and reducing the potential for contamination. In addition, the Dynamic Obstacle Compensation of our LED automatically adapts to the shadows in the light field. Furthermore, Intuitive Sterile Surgeon Control makes surgical operations safer and more ergonomic for surgeons.

The user interface design is simplicity itself – anyone can use it.



Model	ESEL-700+700	ESEL-700+500	ESEL-500+500
Voltage	95-245V, 50/60HZ	95-245V, 50/60HZ	95-245V, 50/60HZ
Light Intensity at 1m (EC)	60,000-180,000/ 60,000 -180,000	60,000-180,000 / 40,000 -160,000	40,000-160,000/ 40,000 -160,000
Light Intensity Ajustable	0%-100%	0%-100%	0%-100%
Lamp Head Diameter(MM)	700/700	700/700	700/700
LED Bulb Quantity	112 + 112 PCS		
Color temperature(Kelvin)	3,000 -5,800	3,000 -5,800	3,000 -5,800
Color rendering index Ra	96	96	96
Color rendering index R9	98	98	98
Spot Size Beam	150-350 / 150-350	150-350 / 90-280	90-280 / 90-280
Total Radiant Flux Density	364W/	364W/	364W/
Endo Ambient Lights	Green + Red	Green + Red + Blue	Green + Red + Blue
Endo Lights Quantity (PCS)	12 + 12	12 + 6	6 + 6
Light Intensity For Endo Lights	15%	12%	10%
Rated Power	220W	190W	160W
Depth of illumination (L1+L2) @ 60 %	750MM	700MM	650MM
Depth of illumination (L1+L2) @ 20 %	1400MM	1300MM	1200MM
Class Of Protective	IP55	IP55	IP55
Main Material	Aluminum Alloy	Aluminum Alloy	Aluminum Alloy
Rotation	540°	540°	540°
4.3" TFT LCD Touch Screen	Optional	Optional	Optional
Dynamic Obstacle Compensation	Optional	Optional	Optional
Back Up Rechargeable Battery	Optional	Optional	Optional
Internal Sony Camera 10X	Optional	Optional	Optional
Monitor (21Inches)	Optional	Optional	Optional
LED Brand	OSRAM	OSRAM	OSRAM

TECHNICAL SHEET

Each medical specialty requires particular and specific installations. The modular design of our LED surgical lighting with multiple associated products brings a unique architectural, tailor-made solution which precisely responds to both your current and future needs.



Model	ESEL-700	ESEL-500	ESEL-700L	ESEL-500L
Voltage	95-245V, 50/60HZ	95-245V, 50/60HZ	95-245V, 50/60HZ	95-245V, 50/60HZ
Light Intensity at 1m (EC)	60,000-180,000	40,000 -160,000	60,000-180,000	40,000 -160,000
Light Intensity Ajustable	0%-100%	0%-100%	0%-100%	0%-100%
Lamp Head Diameter(MM)	700	700	700	700
LED Bulb Quantity	112 PCS	82 PCS	112 PCS	82 PCS
Color temperature(Kelvin)	3,000 -5,800	3,000 -5,800	3,000 -5,800	3,000 -5,800
Color rendering index Ra	96	96	96	96
Color rendering index R9	98	98	98	98
Spot Size Beam	150-350	90-280	150-350	90-280
Total Radiant Flux Density	364W/ m²	364W/ m²	364W/ m²	364W/ m²
Endo Ambient Lights	Green + Red	Green + Red + Blue	Green + Red	Green + Red + Blue
Endo Lights Quantity (PCS)	12	6	12	6
Light Intensity For Endo Lights	15%	12%	15%	12%
Rated Power	110W	80W	110W	80W
Depth of illumination (L1+L2) @ 60 %	750MM	700MM	750MM	700MM
Depth of illumination (L1+L2) @ 20 %	1400MM	1300MM	1400MM	1300MM
Class Of Protective	IP55	IP55	IP55	IP55
Main Material	Aluminum Alloy	Aluminum Alloy	Aluminum Alloy	Aluminum Alloy
Rotation	540°	540°	540°	540°
4.3" TFT LCD Touch Screen	Optional	Optional	Optional	Optional
Dynamic Obstacle Compensation	Optional	Optional	Optional	Optional
Back Up Rechargeable Battery	Optional	Optional	Optional	Optional
Internal Sony Camera 10X	Optional	Optional	Optional	Optional
Monitor (21Inches)	Optional	Optional	Optional	Optional
LED Brand	OSRAM	OSRAM	OSRAM	OSRAM